



www.tellmewi.com

PTZ Camera Medium Speed Dome

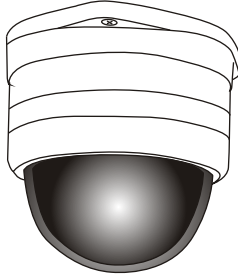


PTZ (Pan / Tilt / Zoom)

Domed structure, compact body and internal black components, allow a discreet monitoring. The body rotates without noise or clicks and has a wide angle lens. Many automatic functions allow you to capture excellent images both in quality and sharpness.

code 1001

User Manual



- Easy to use
- High level of reliability
- Preset positions
- Auto Adjust Focus - Light
- Auto overturning
- Auto scan

Index

| | |
|---|--------|
| 1. PTZ Camera Technical Specifications | Pag.3 |
| 2. Knowing the camera PTZ | Pag.4 |
| 3. Installation Instructions | Pag.4 |
| 4. General features of the camera..... | Pag.6 |
| 5. Encoding CCTV, Communication Address | Pag.7 |
| 6. Connecting the PTZ camera with Tell Me Wi Hub..... | Pag.9 |
| 7. Warranty..... | Pag.11 |

1. PTZ Camera Technical Specifications

| Dome Parameter | |
|--------------------------------------|--|
| Description | Features |
| Video Output (S/N) | 1.0±0.2VP-P, 75Ω compound video signal ≥50dB |
| Manual Speed | (0.5°~50°/s)/Vertical(0.5°~50°/s) |
| Preset Speed | 50°/s |
| Rotation | Horizontal 360°endless rotation Vertical 0~92°with auto overturn |
| Focus Speed auto-control | control speed auto-adjusting according to the focal length |
| Preset Positions | 128 pieces |
| Auto overturning | Vertical 90°auto turning into 180° |
| Auto scanning Synchronization System | 2 pieces, 1 auto scanning route and speed can be set |
| Communication Baud Rate | Internal / External optional |
| Address Range | 1200/2400/4800/9600/bps 1~256 |
| Physics Index | |
| Video Output Interface | BNC |
| Remote Control | RS485 twisted cable |
| Environment Temperature | -10°C +50°C |
| Environment Humidity | 0~95%(no congealing) |
| International Protection | 24h protective housing, 3000V lighting-proof, surge voltage protective |
| Dimension | 125×125(L×D) |
| Weight casing | 1kg(without bracket and adapter) transparent or semi-transparent |

Table 1

2. Knowing the Camera

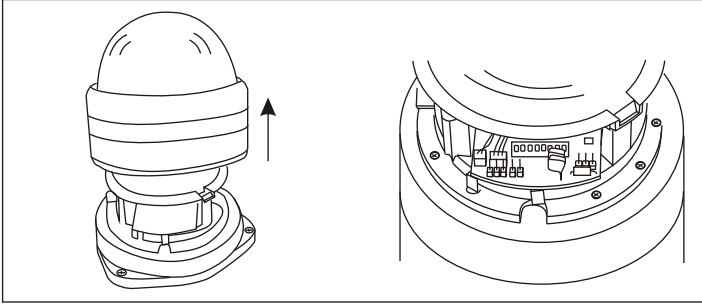


Figure 1: Unscrew and remove the shell dome

3. Installation Instructions

The position of the PTZ camera can be made without support for placement on the ceiling, with support for placement on the wall.

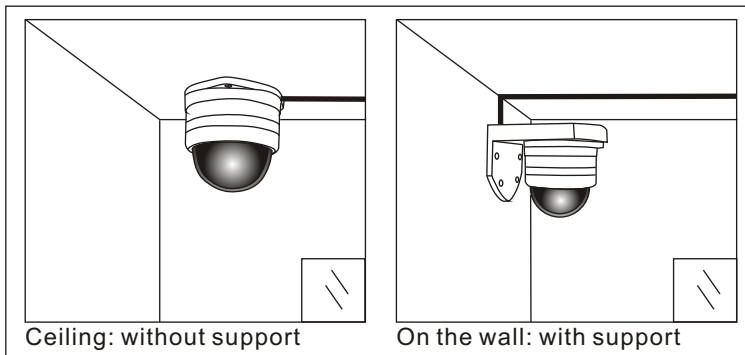


Figure 2

3.1 Ceiling

To install the camera on the ceiling, must execute the following steps:

1. Secure the camera with 3 screws through the holes in the base
2. Mark the holes in the ceiling by placing the camera and secure it with the expansion screws

3.2 Wall mounting

To install on the wall is necessary to bring the arm support (optional)

To install the camera on a wall you must perform the following steps:

- A. Unscrew and remove the cover of the support
- B. Pass through the call connection cables, power supply and RS485 cable
- C. Close the cover and screw the camera on the support using the three holes in the base
- D. Mark the hole locations on the wall and then secure the camera mount to the wall itself.

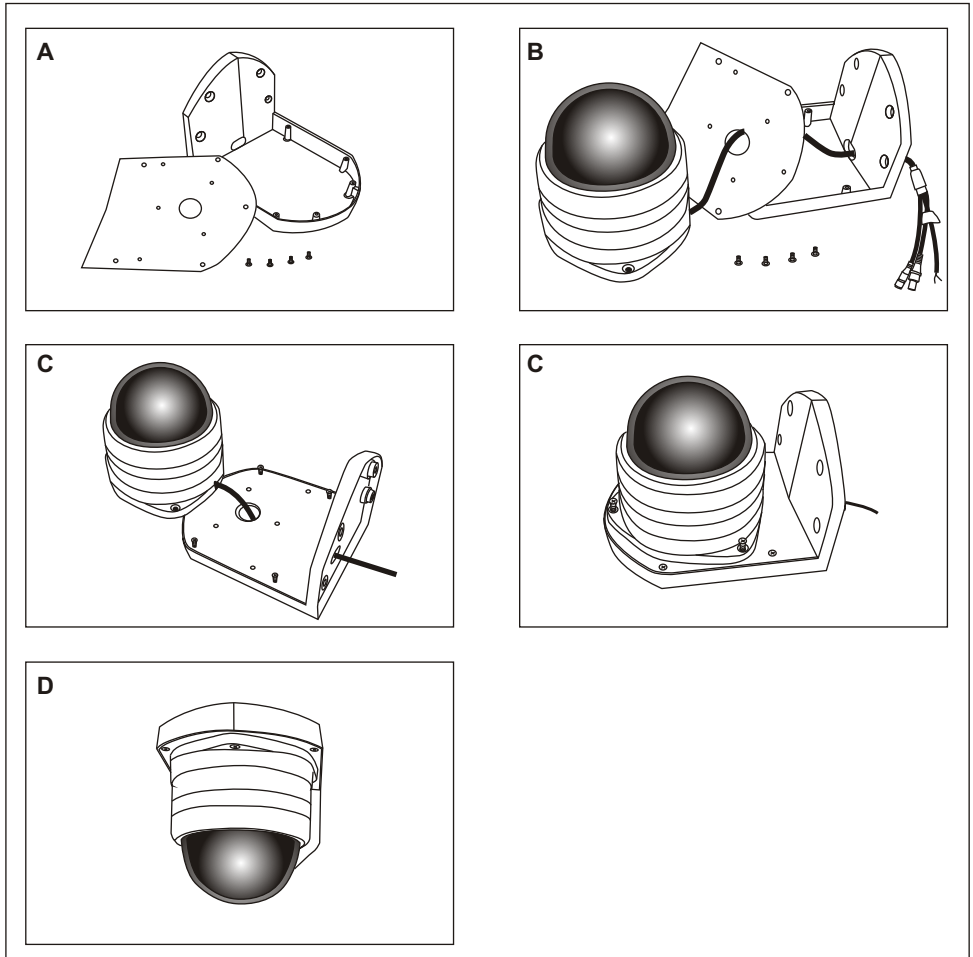


Figure 3

Attach the bracket to the wall using expansion screws.

4. General Features camera

1. CCTV Lenses

The Dome and 'ready acceptance of cameras in a single card that can be equipped with several objectives: 420/540TVL etc.

a) Built-in Decoder

- 1) Full digital design, all data saved inside of the module with memory function at accidental power-off.
- 2) All in one integrated design, high reliability
- 3) 128 preset positions freely saved
- 4) With RS485 remote control interface
- 5) Expanding Function, any keyboard can operate the control of this PTZ camera.

b) Built-in PTZ

- 1) Precise stepping electrical motor, stable rotation, flexible response, correct location
- 2) All in One Integrated design, compact structure, fast cable connection, facility for use
- 3) a steering precise, 360 ° endless horizontal rotation, vertical 0-92° movement, 180 ° auto overturning
- 4) Slow horizontal rotation at 1 ° / s, no vibration images
- 5) Former movement automatically restored after power-on

c) Built in all in one camera

- 1) Auto Focus, Auto Iris, Auto-Bright Control, AWB
- 2) Automatic switching Colour - B / W, BLC, AES

5. Set CCTV encoding

The camera is equipped with 10 Dipswitches used to set the communication address and control protocols (PELCO-D/P). Any command should agree with the targeted address and camera only response when address code is the same.

5.1 Setting DIP Switches

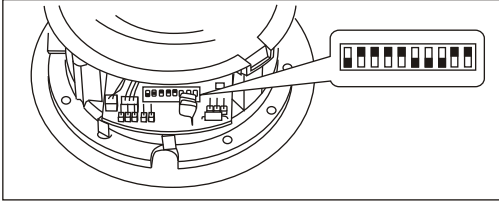


Figura 4

The internal black case has 10 DIP switches. 8,7,6,5,4,3,2,1 are for Address setting, while 10,9 are for Communication Baud Rate. The address setting must be communicated to the 'Central'.

Are presented in Tables positions of dip switches, shall be understood as a general rule that the positions "ON" are identified with the figure "1" and "OFF" position with the digit "0".

a) Baud Rate setting

| Baud Rate | Switch # (SW2) | | | Baud Rate | Switch # (SW2) | | |
|-----------|----------------|----|---|-----------|----------------|----|---|
| | BIT | 10 | 9 | | BIT | 10 | 9 |
| 2400 bps | | 0 | 1 | 1200 bps | | 1 | 1 |
| 4800 bps | | 1 | 0 | 9600 bps | | 0 | 0 |

Tabella 2

b) Address Code Setting

There is correspondence between the camera and behavior code. There is no repetition of code. The table below shows the positions that can be set by adjusting the dip switches. Remember that "1" for ON, "0" for OFF. These codes will then be shown on the Main Unit.

| Address | Address Switch (8 digits) | | | | | | | | Address | Address Switch (8 digits) | | | | | | | |
|---------|------------------------------|---|---|---|---|---|---|---|---------|------------------------------|---|---|---|---|---|---|---|
| | 1 | 2 | 3 | 4 | 5 | 6 | 7 | 8 | | 1 | 2 | 3 | 4 | 5 | 6 | 7 | 8 |
| 1 | 1 | 0 | 0 | 0 | 0 | 0 | 0 | 0 | 33 | 1 | 0 | 0 | 0 | 0 | 1 | 0 | 0 |
| 2 | 0 | 1 | 0 | 0 | 0 | 0 | 0 | 0 | 34 | 0 | 1 | 0 | 0 | 0 | 1 | 0 | 0 |
| 3 | 1 | 1 | 0 | 0 | 0 | 0 | 0 | 0 | 35 | 1 | 1 | 0 | 0 | 0 | 1 | 0 | 0 |
| 4 | 0 | 0 | 1 | 0 | 0 | 0 | 0 | 0 | 36 | 0 | 0 | 1 | 0 | 0 | 1 | 0 | 0 |
| 5 | 1 | 0 | 1 | 0 | 0 | 0 | 0 | 0 | 37 | 1 | 0 | 1 | 0 | 0 | 1 | 0 | 0 |
| 6 | 0 | 1 | 1 | 0 | 0 | 0 | 0 | 0 | 38 | 0 | 1 | 1 | 0 | 0 | 1 | 0 | 0 |
| 7 | 1 | 1 | 1 | 0 | 0 | 0 | 0 | 0 | 39 | 1 | 1 | 1 | 0 | 0 | 1 | 0 | 0 |
| 8 | 0 | 0 | 0 | 1 | 0 | 0 | 0 | 0 | 40 | 0 | 0 | 0 | 1 | 0 | 1 | 0 | 0 |
| 9 | 1 | 0 | 0 | 1 | 0 | 0 | 0 | 0 | 41 | 1 | 0 | 0 | 1 | 0 | 1 | 0 | 0 |
| 10 | 0 | 1 | 0 | 1 | 0 | 0 | 0 | 0 | 42 | 0 | 1 | 0 | 1 | 0 | 1 | 0 | 0 |
| 11 | 1 | 1 | 0 | 1 | 0 | 0 | 0 | 0 | 43 | 1 | 1 | 0 | 1 | 0 | 1 | 0 | 0 |
| 12 | 0 | 0 | 1 | 1 | 0 | 0 | 0 | 0 | 44 | 0 | 0 | 1 | 1 | 0 | 1 | 0 | 0 |
| 13 | 1 | 0 | 1 | 1 | 0 | 0 | 0 | 0 | 45 | 1 | 0 | 1 | 1 | 0 | 1 | 0 | 0 |
| 14 | 0 | 1 | 1 | 1 | 0 | 0 | 0 | 0 | 46 | 0 | 1 | 1 | 1 | 0 | 1 | 0 | 0 |
| 15 | 1 | 1 | 1 | 1 | 0 | 0 | 0 | 0 | 47 | 1 | 1 | 1 | 1 | 0 | 1 | 0 | 0 |
| 16 | 0 | 0 | 0 | 0 | 1 | 0 | 0 | 0 | 48 | 0 | 0 | 0 | 0 | 1 | 1 | 0 | 0 |
| 17 | 1 | 0 | 0 | 0 | 1 | 0 | 0 | 0 | 49 | 1 | 0 | 0 | 0 | 1 | 1 | 0 | 0 |
| 18 | 0 | 1 | 0 | 0 | 1 | 0 | 0 | 0 | 50 | 0 | 1 | 0 | 0 | 1 | 1 | 0 | 0 |
| 19 | 1 | 1 | 0 | 0 | 1 | 0 | 0 | 0 | 51 | 1 | 1 | 0 | 0 | 1 | 1 | 0 | 0 |
| 20 | 0 | 0 | 1 | 0 | 1 | 0 | 0 | 0 | 52 | 0 | 0 | 1 | 0 | 1 | 1 | 0 | 0 |
| 21 | 1 | 0 | 1 | 0 | 1 | 0 | 0 | 0 | 53 | 1 | 0 | 1 | 0 | 1 | 1 | 0 | 0 |
| 22 | 0 | 1 | 1 | 0 | 1 | 0 | 0 | 0 | 54 | 0 | 1 | 1 | 0 | 1 | 1 | 0 | 0 |
| 23 | 1 | 1 | 1 | 0 | 1 | 0 | 0 | 0 | 55 | 1 | 1 | 1 | 0 | 1 | 1 | 0 | 0 |
| 24 | 0 | 0 | 0 | 1 | 1 | 0 | 0 | 0 | 56 | 0 | 0 | 0 | 1 | 1 | 1 | 0 | 0 |
| 25 | 1 | 0 | 0 | 1 | 1 | 0 | 0 | 0 | 57 | 1 | 0 | 0 | 1 | 1 | 1 | 0 | 0 |
| 26 | 0 | 1 | 0 | 1 | 1 | 0 | 0 | 0 | 58 | 0 | 1 | 0 | 1 | 1 | 1 | 0 | 0 |
| 27 | 1 | 1 | 0 | 1 | 1 | 0 | 0 | 0 | 59 | 1 | 1 | 0 | 1 | 1 | 1 | 0 | 0 |
| 28 | 0 | 0 | 1 | 1 | 1 | 0 | 0 | 0 | 60 | 0 | 0 | 1 | 1 | 1 | 1 | 0 | 0 |
| 29 | 1 | 0 | 1 | 1 | 1 | 0 | 0 | 0 | 61 | 1 | 0 | 1 | 1 | 1 | 1 | 0 | 0 |
| 30 | 1 | 1 | 1 | 1 | 0 | 0 | 0 | 0 | 62 | 0 | 1 | 1 | 1 | 1 | 1 | 0 | 0 |
| 31 | 1 | 1 | 1 | 1 | 1 | 0 | 0 | 0 | .. | . | . | . | . | . | . | . | . |
| 32 | 0 | 0 | 0 | 0 | 0 | 1 | 0 | 0 | 255 | 1 | 1 | 1 | 1 | 1 | 1 | 1 | 1 |

Tabella 3

6. Encoding PTZ Camera with Main Unit TELL ME WI

The camera output has 3 rows endings:

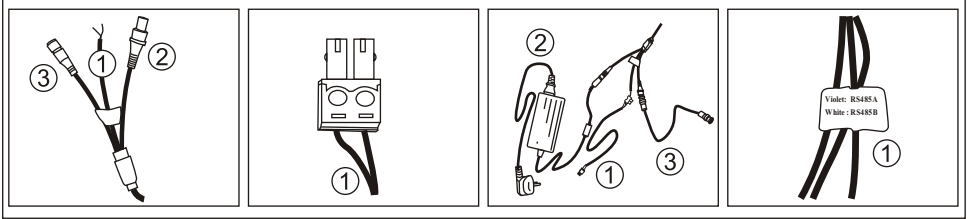


Figure 5

1) cable-free 2-wire RS485 is used for physical connection to the Hub via terminal in the hook on the back of the Hub and marked RS 485 A - B. In the case of extensions to pay attention to the indication on the label of the camera cable that indicates the color of the cables and the corresponding hook position A or B with the Hub. (eg Viola White RS RS 485 A 485 B where A and B are the positions of entry of the Hub).

2) power supply (transformer / power line current). Allows the lighting, the view and the camera motion.

3) serial cable to be connected in one of four positions available on the rear hub and matching the selected channel.

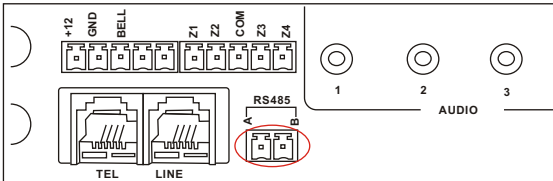


Figure 6: in the red circle the point of entrance of cable 1

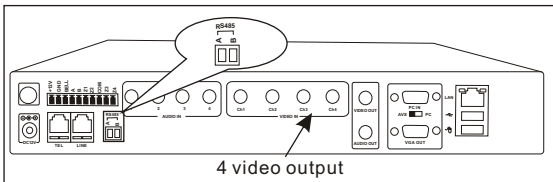
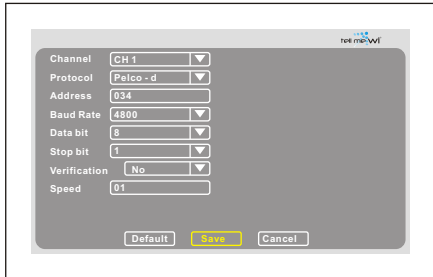


Figure 7: Choose one of the 4 video outputs which correspond to the four video channels Hub



Press **Quick Menu> Main Menu> Settings> Settings. PTZ**

Continue configuring the channel of the PTZ camera.

Once the three cables are reconnected, you have to access to the Hub Menu

Figure 9: Channel Settings PTZ Camera

Channel: indicate the channel is connected to the PTZ camera. (1 -2 -3 or 4)

Protocol: choose from Pelco Pelco-d and-p on the basis of specific requests from the camera. This indication is' a peculiar feature of the report for communication between the camera and the receiving apparatus. Pelco-d and 'the correct approach for our system.

Address: address of the camera according to settings made with the dip switches of the camera. (in our example Fig. 8 e '034)

Baud Rate: Enter the baud rate required by the camera is choosing between 2400/4800/9600/19200/38400 and 'functional observations' optimal setting 4800.

Data Bit: choose between 5 / 6 / 7 / 8, is usually set to 8.

Stop Bit: choose between 1 / 2, is usually set to 1.

Verification: No Odd Even choose from, it's usually set to No.

Speed: Set 01.

Note: After the connection to test verification functions.

Press the **Save** button to enable the setting, or press **Cancel** to cancel.

Note: For the control and all the settings of PTZ Camera System with Wi Tell Me, refer to Operational Manual Hub.

7. Warranty

The Supplier guarantees this product against recognised manufacturing defects for 12 months from delivery. During the guaranteed period, products can be judged defected, substituted or repaired, at the sole discretion of the Supplier. The guarantee does not cover products having been manipulated, repaired by third people or used not accordingly to the foreseen usage. Terms of the guarantee does not incur the supplier into responsibilities for eventual damages, for any reason occurred to the Client. Product delivery to the Supplier according to this guarantee, as packing costs and any other accessorial costs as well, are in the account of the Client.

Declaration of Conformity: Home Care Ltd hereby declares that this Magnetic Sensor is in conformity with the essential requirements and to the relevant provisions of the following directives

In conformity with the RoHS directive 2002/95/EC

EPA 3050 B:1996 EN 1122: 2001

EPA 3052: 1006 EPA 3060 A

EPA 7196 EPA 3540 C EPA 8270 C

In conformity with the EC Council directive of 2004/108/EC

EN 55022: 2006

EN 55024: 1998 + A2: 2003

The Declaration of Conformity can be found on the website www.tellmewi.com



WEEE directive: This product should be handed over to a designated collection point, e.g., on an authorized one-for-one basis when you buy a new similar product or to an authorized collection site for recycling waste electrical and electronic equipment. Improper handling of this kind of waste could have a possible negative impact on the environment and human health due to potentially hazardous substances.



Technical specifications are subject to change without notice. The manufacturer, importer and retailer disclaim any responsibility for any inaccuracies in the information in this manual as well as in translation and / or typographical errors.

Rights reserved. No parts of this document can be reproduced without written consent of the editor.

Importato e Distribuito da:



Home Care HK Limited
Unit 1002, 10 Fl.
Greenfield Tower, Concordia Plaza,
1 Science Museum Road,
Tsim Sha Tsui, Hong Kong S.A.R.

Info@tellmewi.com
Made in PRC

Code 1001-M001-EN-01
Instruction Manual



tell me wi[®]

www.tellmewi.com