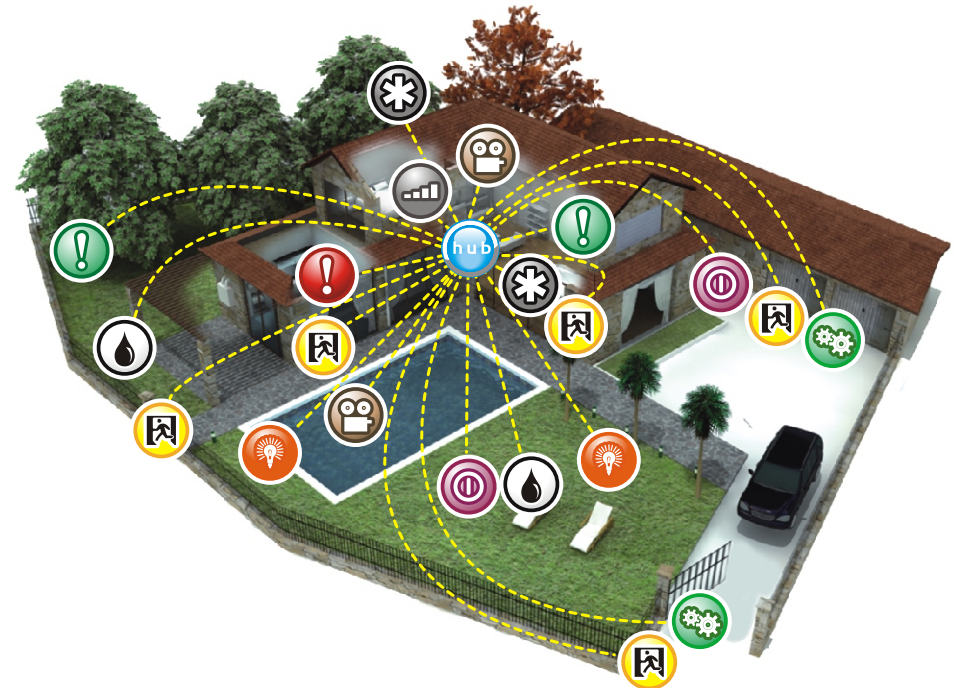




WIRELESS HOME AUTOMATION SYSTEM

DEMO KIT Manual



Home Care HK Limited
Unit 1002, 10Fl.
Greenfield Tower, Concordia Plaza
1 Science Museum Road
Tsim Sha Tsui, Hong Kong SAR

Tel: +852 2126 7837
Fax: +852 3186 2887
www.tellmewi.com
info@tellmewi.com

Tell Me Wi is a trouble-free, smart solution for anyone looking for a HOME AUTOMATION system provided with Complete Security. It is a fully integrated WIRELESS Home Automation-Video Surveillance-Alarm system that always keep the owner totally informed. Supports 32 home automation devices, 4 or 8 video channels, 28 wireless alarm and 4 wired alarm devices. This multi faceted system interacts with a centralized online platform for a hassle-free one stop control, sms messages for on-the-go management, and compatibility with all smart phones platforms for live video viewing. All these features combined with an easy and convenient user interface. Engineered with enhanced technology, the **Tell Me Wi** is the most complete, secure, reliable and flexible wireless Home Automation System.

Tell Me Wi, Simplifies Your World

Code 8904/8908

Check List of the Kit

- N .01 HUB Tell Me Wi item. 8907
- N. 02 Double Tech Detectors item.2002
- N. 02 Wireless Cameras item.1015
- N. 01 Window Magentic Sensor item.2301
- N 01 sensore Magnetico per Porte art. 2302
- N. 01 Mouse
- N. 01 Sirena Wireless da interno art.2804

Index

1 Installation Guide.....	Pag5
1.1 Devices and LAN connections to Tell Me Wi HUB.....	pag5
1.2 Connection to the power line.....	pag5
1.3 Powering On the Tell Me Wi Hub.....	pag5
1.4 Basic configuration settings.....	pag6
1.5 Configuring network settings on your Hub.....	pag7
1.6 Accessing to the router configuration.....	pag8
1.7 Remote Video Control.....	pag10
1.8 Connection with the Tell Me Wi Portal.....	pag10
2 Alarm Module: Setting and Features.....	pag11
2.1 Wireless Alarm Devices.....	pag11
2.2 Wireless zone Configuration.....	pag11
2.3 Wireless Siren.....	pag12
2.4 Definition of the Zone Type.....	pag12
2.5 Activation of the alarm system.....	pag13
2.5.1 Manual Activation.....	pag13
2.5.2 Automatic Activation.....	pag13
2.6 Linking Alarm Zones to Video Channels.....	pag14
3 Video Module Functions.....	pag15
3.1 Video Setting.....	pag15
3.1.1 Mosaic Feature.....	pag16
3.2 Video Recording.....	pag16
3.2.1 Manual Recording.....	pag16
3.2.2 Scheduled Recording.....	pag17
3.3 MOTION DETECTION (MD SETTING).....	pag18
3.4 Search and Playback Video File.....	pag18
3.4.1 Search Video File.....	pag19
3.4.2 Video Playback.....	pag19
3.4.3 Play Video Commands.....	pag19
3.5 PTZ Camera Management.....	pag20
3.5.1 PTZ Setting.....	pag20
3.5.2 PTZ Cameras Movement Control.....	pag20
3.5.3 PTZ Preset Setting.....	pag21
3.5.4 Linking Alarm to PTZ Camera.....	pag22

Specifications

Compressione	H264
Risoluzione in registrazione	CIF, QCIF, qualità 8, 25 fps
Modalità registrazione	24 ore, programmato, allarme, Motion Detection
Motion detection	SI, programmabile
Ingressi video	4 canali
Ingressi audio	4 canali
Uscita video	1 canale
Uscita audio	1 canale
Uscita VGA	1 uscita
Ingresso PC	1 ingresso
Porte USB	3 porte USB 2.0
Ingressi periferiche wired	4 periferiche
Ingressi di allarme wireless	28 periferiche
Ingressi di Home Automation wireless	32 periferiche
Ingressi telecomandi wireless	8 telecomandi
Ingressi sirena wired	1 ingresso
Ingressi sirene wireless	?
Sirena interna	1 incorporata
Batteria di emergenza	1 incorporata
PTZ	RS-485
Frequenza di funzionamento	868MHz e 433MHz
Backup	USB 2.0 Flash Memory, Archiviazione on line portale
Hard Disk	SATA 250Gb
Gestione durata archivio	Programmabile
Connessione di rete	Porta ethernet RJ45 10/100Mb
Comunicazioni di rete	Interfaccia: TCP/IP - Protocolli:HTTP,DDNS,PPPoE
Controllo Remoto	Tramite Cellulare e Portale
Operazioni da remoto tramite portale	Visualizzazione, Playback, Registrazione, Setup, Archivio
Operazioni da remoto tramite telefono	Visualizzazione, Playback, Registrazione, Archivio
Accessori di Comando	Mouse USB, Telecomando
Alimentazione	Alimentatore incluso 110-240V 50/60 Hz
Dimensioni	310x250x55mm

Table 1: Specifications

1 Installation Guide

1.1 Devices and LAN connections to Tell Me Wi HUB

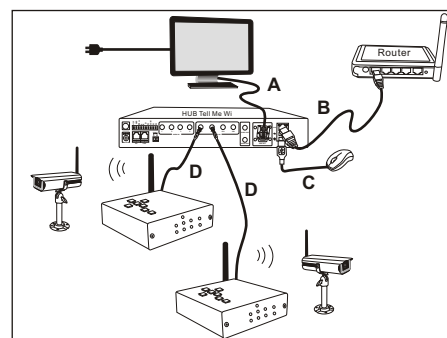


Figure 1: connect devices

- Connect the TV/monitor to the VGA spot
- Connect the **Tell Me Wi** HUB to the Router through RJ45 cable
- Connect the mouse to the USB spot on the HUB
- Connect the video cameras to the **Tell Me Wi** HUB, through coaxial cables. Connect them to the video channels (CH1, CH2 etc.) you choose.

1.2 Connection to the power line

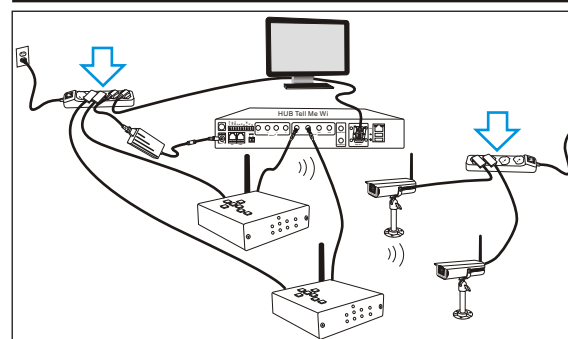


Figure 2: connect the devices

Connect all the devices to the power line and switch them on one by one.

1.3 Powering On the Tell Me Wi Hub

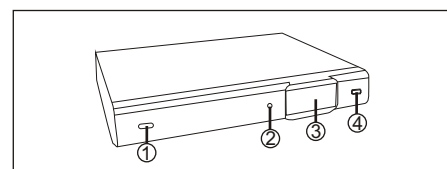


Figure 3: Front view

- On/Off Power
- Infrared Pointer
- Display
- Mouse Port (not to use with different devices from the Mouse)

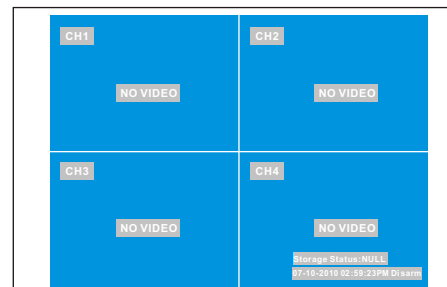


Figure 4: screen

Press the on/off button located on the front of the hub, the hub will turn on and you will see 4 windows on the monitor, those are the 4 video channels. In the right hand side of the screen will appear the date and time and the alarm system status.

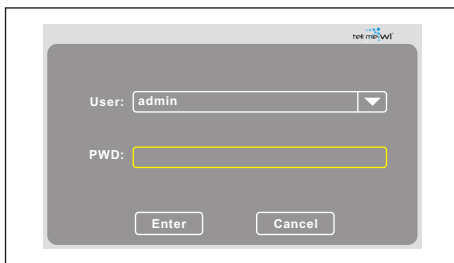


Figure 5: Login

Press the right button anywhere on the screen to access the Quick Menu'. Press Confirm to enter (User default is: admin and the password is not set). Press Cancel to delete.

Press the right button of the mouse anywhere on the screen to enter the Quick Menu.

When you press the left button of the mouse you confirm your selection.

Note: at any time during menu' consultation if you press the right button of the mouse you exit from the menu' and you return to the previous menu'.

Functions of Quick Menu'

Single window: to control on the screen a single channel full screen.

Four windows: to control on the screen 4 channels simultaneously.

PTZ Control: PTZ cameras control (tilt, pan and zoom), setting preset (see chapter) and Patterns.

Channel Parameters: parameters configuration of each of the 4 video channels(brightness, colour, saturation, contrast).

Search file: search and reproduce video recordings.

Manual control: control startup and shutdown of video recordings.

Alarm: manual control of alarm system.(Away arm, Home arm, Disarm)

Automation: choose between the 4 scenarios of home automation.

Lock screen: enables the menu protection password.

Main menu: enter to Main Menu.

Figure 6: Quick Menu

1.4 Basic configuration settings

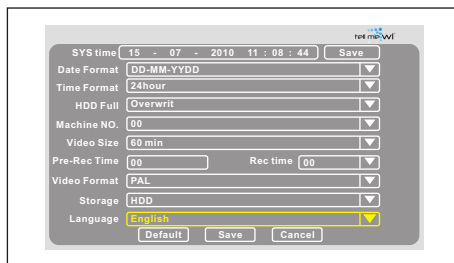


Figure 7: basic configuration setting

Press: **Quick Menu, Main Menu, Settings, Basic Settings**

Before make use of Hub's functions is necessary to configure basic settings to ensure the proper operation. Set these fields to complete the basic configuration.

Go to "System Settings" on the Main Menu, then select "Basic Settings".

System Date & Time: setting the date and time, press Save to confirm or Cancel to delete.

Date Format: YYYY-MM-DD / DD-MM-YYYY

Time Format: 12H / 24H

Video Overwrites: Overlay or No Overlay (when the HDD is full, select if you want the old data be written over with new data)

Video Length: 15min / 30min / 45min / 60min

Length of Pre-Rec.: setting time in prerecording videos is expressed by Seconds, you can use it when you set an Alarm recording or Motion Detection(MD).

Length of Recording: setting time in recording videos is expressed by seconds, you can use it when you set Alarm recording or Motion Detection.

Hub Serial Number: set the TMW Hub number in order to be recognized from the CMS (Central Monitoring Station)

Video Format: PAL / NTSC

Saving Option: select where storing the video, Hard Disk (HDD) or SD card (SD), By default is the Hard Disk

Disk Language: choose the language to use

Press **SAVE** to confirm, or **CANCEL** to quit.

1.5 Configuring network settings on your Hub

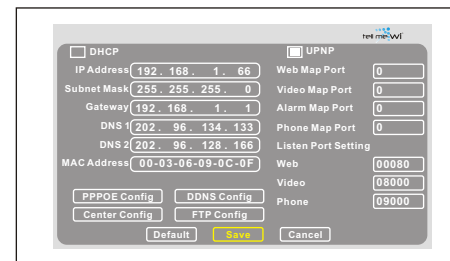


Figure 8: Net Configuration

Press **Quick Menu, Main Menu, Settings, Network**

To establish the Internet connection to the Hub you have to configure the network settings as follows:

Tell Me Wi Hub is set to acquire the network settings automatically enabling DHCP function.

Note: to facilitate the next steps for configuring the router is important to know the IP Address assigned to the HUB.

Manual setting of Network configuration:

IP Address: Enter your local IP address.

Subnet Mask: Enter your local subnet mask.

MAC Address: Enter your local MAC address.

Default Gateway: Enter your local default gateway.

Preferred DNS: Enter your local preferred DNS.

Alternate DNS: Enter your local alternate DNS.

Setting the communication ports:

Web Browsing Port: default setting at 08110

Video Port: default setting at 08111

Alarm Port: default setting at 08112

Mobile Browsing Port: default setting at 08113

Enabling UPNP function Router automatically will retrieve the informations to set the communication ports.

Listening ports

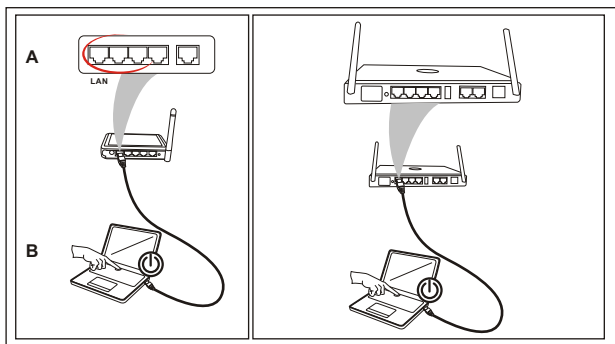
Web: default setting at 00080

Video: default setting at 08000

Telephone: default setting at 09000

Press **Save** to confirm or **Cancel** to delete

1.6 Accessing to the router configuration



The Hub can communicate with Internet world if communication ports are configured. The following steps to complete the configuration.

A. Connect the PC to the HUB through a RJ45 cable, or by Wi-Fi connection.

B. Power on the PC

Figure 9: connect PC to the HUB

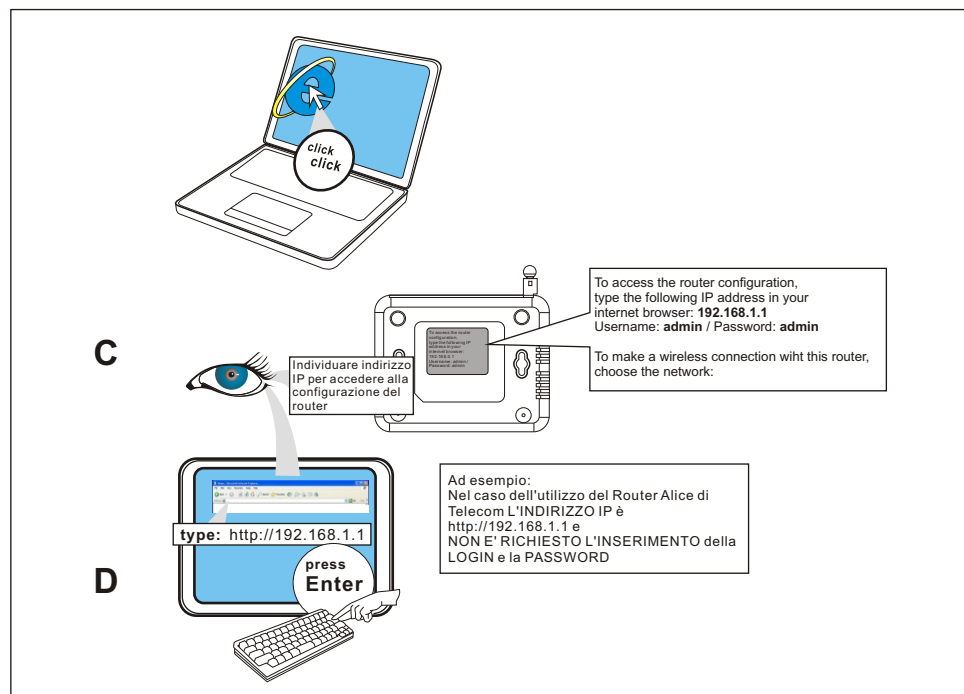


Figure 10 : Access to Router

C. Find the router IP address, Login and Password usually located on the back of your router. If it is not there you should contact your telephone carrier.

D. Insert in the Internet Explorer browser the IP address of the router preceded by **http://** For example if the router IP address is **192.168.1.1**, you have to write **http://192.168.1.1**, then press **Enter** to confirm.

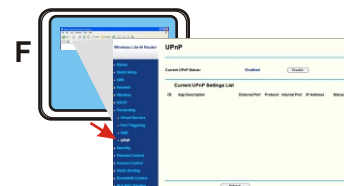
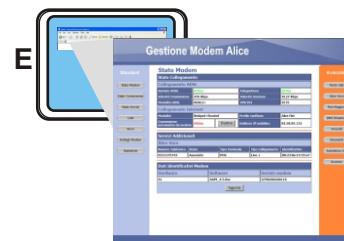


Figure:

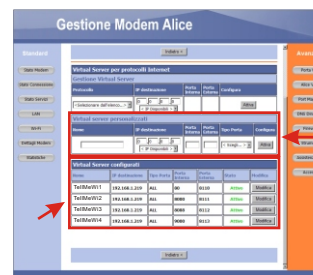
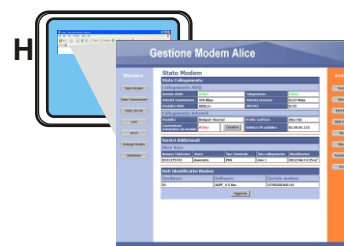
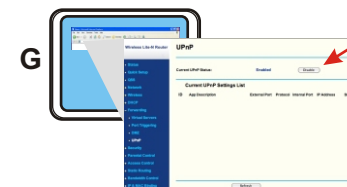


Figure:



E. Log-in to the system by inserting the username and password you found before.

F. Once you entered look for UPnP port. (if you can not find it go to point D)

G. Enable UPnP port to let the router collect the informations it needs to open the Tell Me Wi HUB ports. (Now go to Step 6)

H. Look for Port Mapping to open the 4 ports that the Tell Me Wi HUB needs. Follow the informations below:

Name: TellMeWi 1
Destination IP: 192.168.1.219
Internal port: 80
External port: 8110
Type port: ALL
Press **Connect** to confirm

Configuration of the second port:
Name: Tell Me Wi 2
Destination IP: 192.168.1.219
Internal port: 8000
External port: 8111
Type port: ALL
Press **Connect** to confirm

Name: Tell Me Wi 3
Destination IP: 192.168.1.219
Internal port: 8088
External port: 8112
Type port: ALL
Press **Connect** to confirm

Name: Tell Me Wi 4
Destination IP: 192.168.1.219
Internal port: 9000
External port: 8113
Type port: ALL
Press **Connect** to confirm

Double check all the informations you inserted, comparing them to the provided list.

1.7 Remote Video Control



To connect remotely to the **Tell Me Wi** Hub it is compulsory to know the Public IP address of the LAN net.

Open a new Internet Explorer Window and Google: "myipaddress", and open the first website. Write down the IP address (Ex.. 78.6.95.xxx). This is the public IP address of your line. You can use this IP address to set your phone or internet access to get into the **Tell Me Wi** HUB from all over the world.

Figure:



Figure 13: Tell Me Wi Console

To access the Hub management console insert the public IP in the address bar and press Enter. Login is Admin and Password is not set.

1.8 Connection with the Tell Me Wi Portal

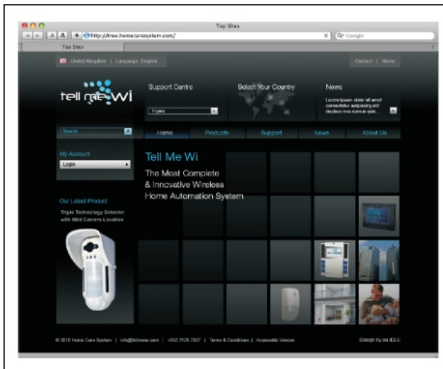


Figure 14: Tell Me Wi Portal

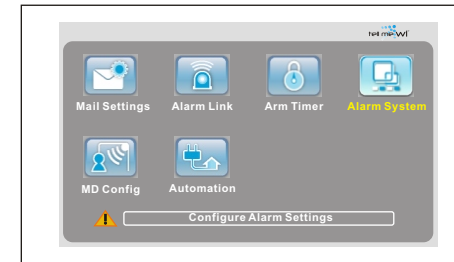
To fully use the advanced functions of **Tell Me Wi** Hub, is required a registration to the Portal. The registration allows to access to additional services that increase the features of the Hub, besides the full integration with all the Smart Mobile Phones platforms.

Please **connect** to the **Tell Me Wi** Guide for all the features implemented on the Portal.

2 Alarm Module: Setting and Features

Alarm Devices connected to **Tell Me Wi** system can be Wireless or Wired. The Hub **Tell Me Wi** can have linked up to a maximum of 4 wired devices, 1 wired siren, 24 wireless alarm devices, 8 remote controllers and 10 wireless sirens.

2.1 Wireless Alarm Devices



Quick Menu>Main Menu>Security> Alarm System

Figure:

Devices have to be connected to the Hub before starting. The connection (to be done only the first time typing the unique code) creates a bonding between the HUB and the wireless devices.

The connection is permanent and one device can be connected to a single Hub.

Once inserted the Unique Code, devices can communicate securely with the Hub.

NOTE: WIRELESS DEVICES ARE AUTOMATICALLY ASSIGNED TO THE FIRST FREE ZONE STARTING FROM ZONE Nr. 5. Adding the first wireless device, the hub will automatically assign the zone Nr 5, to the next the 6th and so on...

2.2 Wireless zone Configuration

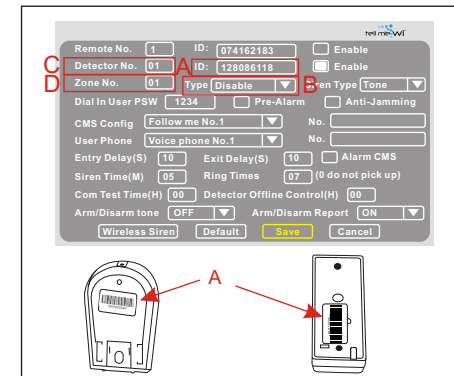


Figure:

Quick Menu> Main Menu> Security>Alarm System

Insert the device number to be registered in the field Detector N. (point C)

In field ID insert the unique 9-digit code on the device (point A)

Select Enable to activate the device. Press Save to confirm or Cancel to delete

Repeat these steps for all devices.

2.3 Wireless Siren

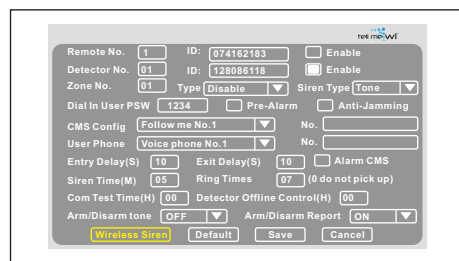


Figura 17: Codifica sirene wireless

To set the Wireless Siren check the instruction manual of the Siren to identify the button to press that sends out the unique code to the Hub **Tell Me Wi**, simultaneously you must press the button "wireless siren" that prepares the Hub to receive the code. Once bonded, the Siren starts working with the **Tell Me Wi** system.

2.4 Definition of the Zone Type

Each device has to be associated with a Type that describes its function.

Possible types are:

Disable: the alarm device is registered but the zone is disabled

Delay: the alarm event is tripped only at the end of a specific set delay, delays can be set in the "Entry Delay" and "Exit Delay" fields, and it is measured in "Seconds".

Perimeter: commonly associated to perimeter sensor or entrance zone (magnetic sensors for windows/doors/inertial/outdoor sensors...)

Burglar: commonly associated to indoor sensors. In the state of Home Alarm they do not trip the Alarm. When the state is Away Alarm they immediately trip the alarm.

24 Hours: the control of the area is constant and for the whole day long. It is to control zones or features like Tamper or Lifesaving alarms. This type of devices is always active, the alarms is always tripped, even in the case the Alarm System is turned off.

Emergency: dedicated to emergencies (anti robbery, panic, elderly care, tie baths...) these devices can be activated even when the system is switched off.

Fire: for smoke, fire, high temperature detectors, it can drive the alarms to different recipients, as Fire Depts...

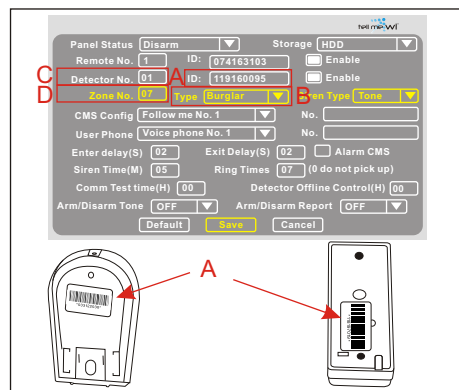


Figure:

The first wireless device registration is automatically assigned to zone 05, detector 02 to zone 06 and so on. In the field **Zone N.** (point D) insert the number of the zone you want to programme. Indicate the **Type** based on the characteristics of the device/zone Define the siren operation: silent,pulse, tone. press Save to confirm or Cancel to delete.

2.5 Activation of the alarm system

2.5.1 Manual Activation

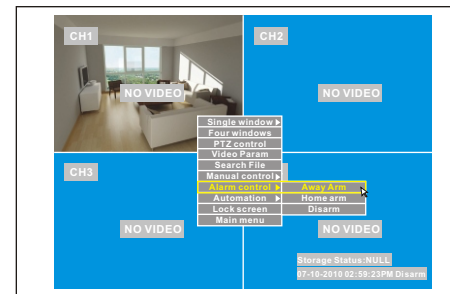


Figure 19: Away Arm

To enable or disable the alarm function you can use the Alarm>Away Arm from the Quick Menu.

There are two different ways to activate the alarm:
Home Alarm: activates only the perimeter devices.
Away Arm: activates all Alarm Devices

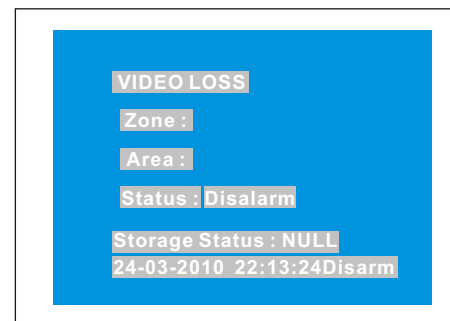


Figure:

A summary of the system status can be found at the bottom right corner of the screen. When the alarm is tripped the **Tell Me Wi** system will inform the zone and the event that caused the alarm.

2.5.2 Automatic Activation

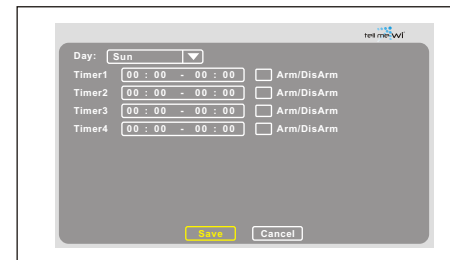


Figure:

In the field **Day** select the day of the week or **All** the days
 The Alarm time intervals can be set at the 1/2/3/4 timers, enable the timer clicking the white box. press **Save** to confirm or **Cancel** to delete

Press: **Quick Menu>Main Menu>Security>Arm Timer**

The alarm system can be automated to your daily or weekly schedule with 4 programmable timers.

2.6 Linking Alarm Zones to Video Channels

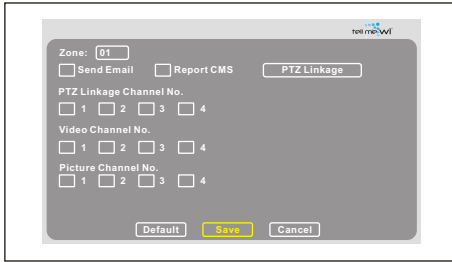


Figure:

Zone: insert the number Zone you want to associate to the channel/s video
Video Channel No.: bind the Zone to one or to all the 4 video channels

Note: if you need to record an alarm event you should set the recording schedule (see Chapter Registration)

There are different ways to connect Zone and Cameras:

PTZ Linkage: enable the desired video channel and press the link to set the characteristics of the PTZ camera control

Note: the features **Cruiser** and **Pattern** are functions that must be enabled on the camera before being managed from the **Tell Me Wi Hub**.

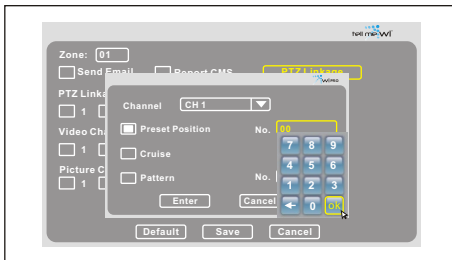


Figure:

Preset: after having set the preset points from the Quick Menu>PTZ Linkage (see chapter: PTZ Cameras Control) enable the preset and indicate the number of locations to reach (it is possible to set one only preset position for each zone)

Cruise: useful to program the camera with a sequence of "preset" settings, select the item to enable the feature.

Pattern: it is a series of sequential programmable pan-tilt-zoom movements from a single camera

Picture Channel No.: associate the area with one of the 4 video channels, or all four, to make a photograph.

Press **Quick Menu>Main Menu>Security>AlarmSystem**

Each zone can be associated to one/all the 4 video channels (cameras). The result is a function composed by an alarm event followed by an immediate recording of the event.

3 Video Module Functions

It is possible to connect up to 4 cameras. The connection is wired through a BNC connector. Any eventual use of wireless cameras will have to be connected to an external receiver.

Features

- H264 compression
- PAL / NTSC protocol management
- Pre Recording buffer settable from 0 to 20 sec.
- Simultaneous control of 4 video areas
- Program Management: Quality, Format, Length and Frames per Second video
- Mosaic function (boundary area privacy) that allows to shade an area from the video recording
- Audio Video Recording Management
- Manual/Automatic recording schedule
- Motion detection function, allows to define the area in which detecting a movement
- Vision of video files: locally, online and on smart phone
- Video-Area Pre-Selection: possibility to Pre-select different areas in the camera screen.
- Streaming function
- Camera Automatic movement to the alarmed area
- manual or automatic video backup on external mass storage (USB) and/or on the web (no chance to destroy the recordings)

3.1 Video Setting

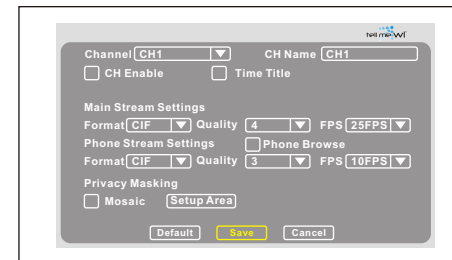


Figure:

Press **Quick Menu>Main Menu>SYS Setting>Video Config**.

In this section, you will find out how to configure the video recording settings, how to record, search and review recorded videos.

Configure the recording settings:

Channel: Select the video channels to record. All / 1 / 2 / 3 / 4 **Name:** You may set a name for the specific video recording location. (Ex.. Baby Room)

CH Enable: enable/disable the transmission of channel on the web

Time Title: shows the time on the recorded video

Main Stream Setting: Video streaming settings on Internet Explorer **Format:** select between CIF or QCIF format

Quality: select the quality grade, between 1 (highest) and 8

FPS: (frame per second) select from 1 to 25

Phone Stream Setting: Video Streaming settings on Smart Phones

Phone Brower: enables the camera control from the smart phones - (white box when enabled)

Format: select between CIF or QCIF format

Quality: select the quality grade, between 1 (highest) and 8

FPS: (frame per second) select from 1 to 25

3.1.1 Mosaic Feature

Enables shading part of the screen.

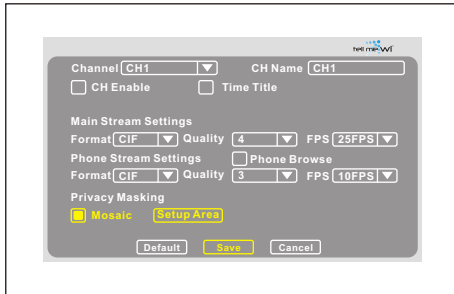


Figure:

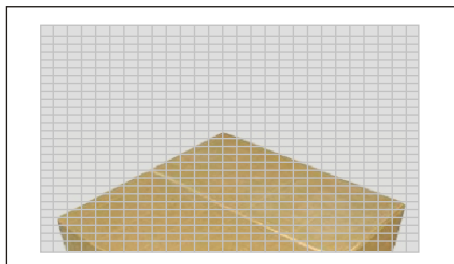


Figure:

Mosaic: enable/disable the Mosaic Function (Note: the feature is enabled with the white box)
Setup Area: press the button to enter the configuration mode, click the left mouse button to set the first angle for the area to exclude, a second click will set the whole area. Click on the white area once more to exit the setting.

Press **Save** to confirm otherwise **Cancel** to cancel.

3.2 Video Recording

3.2.1 Manual Recording

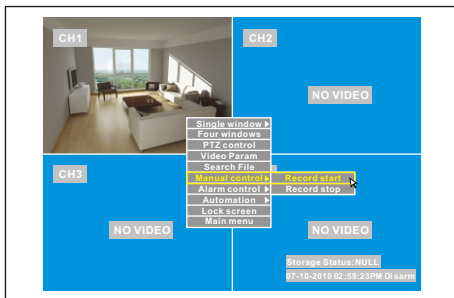


Figure:

Press **Quick Menu>Manual Control**

Manual Recording is very simple, just press the right mouse button, go to the **Quick Menu>Manual control** and select **Record Start**. To stop recording select **Record Stop**.

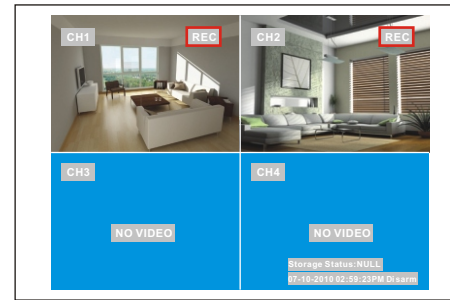


Figure:

To confirm the recording the Tell Me Wi Hub will show the wording **REC** on the video.

3.2.2 Scheduled Recording

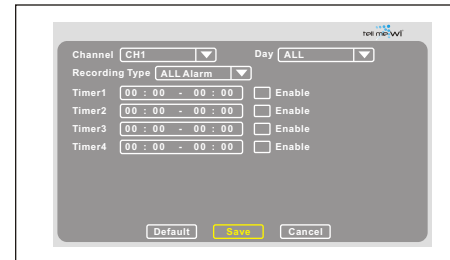


Figure:

Press **Quick Menu>Main Menu>SYS Setting>Video Config**.

This function to set audio and video auto-recordings

Note: By default the Hub sets the Scheduled Recording as 24/7

Channel: select the video-channel to set, selection can be single or for all the channels together

Day: set the day of the week chosen for the recording, the **All** option works for all the days.

Recording Type: selecting between the following options:

Schedule recording: activates the recording timers 1/2/3/4

Alarm Recording: setting this function the recording will start after an alarm event
 To have video-recording function always on you have to set timer 1 with range from 00.00 to 23.59 for all the days of the week and all channels.

Recording MD: setting this function the recording will start when there will be a motion event in the camera range.
 To have video-recording function always on you have to set timer 1 with range from 00.00 to 23.59 for all the days of the week and all channels.

All Alarms: setting this function the recording will start when there will be either an alarm or a motion event.
 To have video-recording function always on you have to set timer 1 with range from 00.00 to 23.59 for all the days of the week and all channels.

Press **Save** to confirm or **Cancel** to delete

3.3 MOTION DETECTION (MD SETTING)

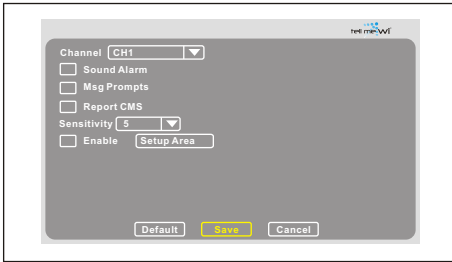


Figure:

Channel: Enter the video channel on which you want to set the motion detection
Enable: enable the function MD (note: this feature is enabled with the white box)
Setup Area: press the button to enter the configuration mode, click the left mouse button to set the first angle fo the area to exclude, a second click will set the whole area. Click on the white are once more to exit the setting.

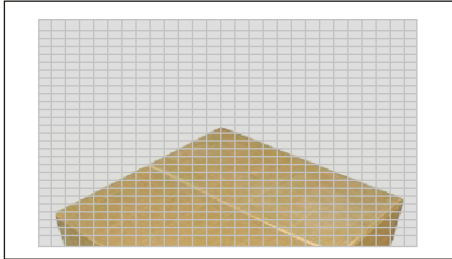


Figure:

Press **Save** to confirm or **Cancel** to delete

Sound Alarm: enables a beep when there is a motion detection
Msg Prompts:
Report to CMS: enable this feature to send an acknowledgment of the motion detection to the CMS
Sensitivity: sensitivity of the camera can be defined, the range is from a minimum of 1 to a maximum 8.

Press **Save** to confirm or **Cancel** to delete

Press the **Default** button to restore the settings to the factory conditions.

3.4 Search and Playback Video File

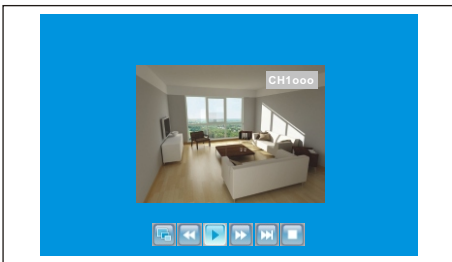


Figura 31: Riproduzione File Video

Press **Quick Menu>Main Menu>Video**

The recordings may be reviewed locally.

3.4.1 Search Video File

Set one or more parameters to search the file:

Video Type: Select the desired option among **Schedule Recorded / Manual Recorded / Alarm Recorded / MD Recorded** or **All** to indicate every recording.
Select Channel: select the desired Video Channel, among **1 and 4** or **All** together.
Recording Time: Select the date and time of the recorded video to search for.

Click Search to start searching.

For each Video the main info are immediately listed in 6 columns:
Channel: the recording channel
Type: the event that generated the recording, types are: Schedule Recorded, Manual Recorded, Alarm Recorded, MD Recorded
Start time: when the recording started.
End time: when the recording ended.
Dimension: weight of the file (in Kilo Byte)

At the lower part of the screen there are 5 buttons allowing to move within the results:

First: the display goes to the first page.
Up: you can scroll through the results going from top to bottom
Down: you can scroll through the results going from bottom to top
Last: the display goes to the last page.

3.4.2 Video Playback

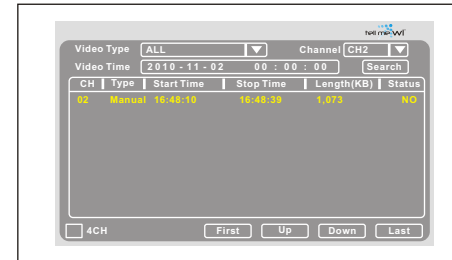


Figure:

Left-click on the file to play.

4 CH: This option is for 4-channel systems only. It allows the user to review the videos of the four video channels simultaneously.

3.4.3 Play Video Commands

A simple user interface to play videos:

- Displaying different formats
- Rewind, Play, Fast Forward
- Slow motion view
- Stop

Figure:

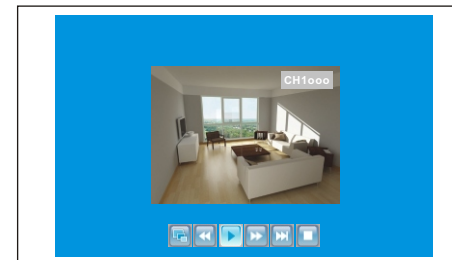
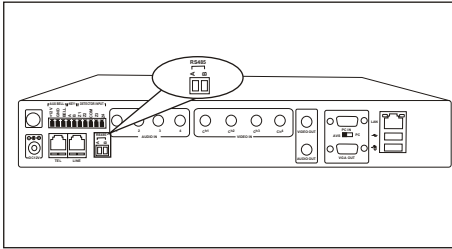


Figure:

3.5 PTZ Camera Management

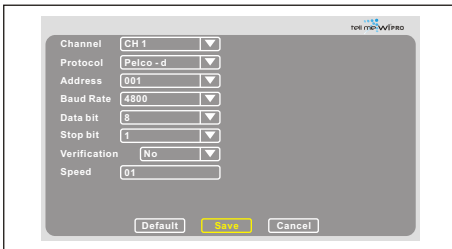
3.5.1 PTZ Setting



Press **Quick Menu>Main Menu>Setting>PTZ setting**

The PTZ (Pan Tilt Zoom) need a serial RS-485 connection (D+, D-) to operate.

Figure:



Proceed to configure the channel with the PTZ Camera

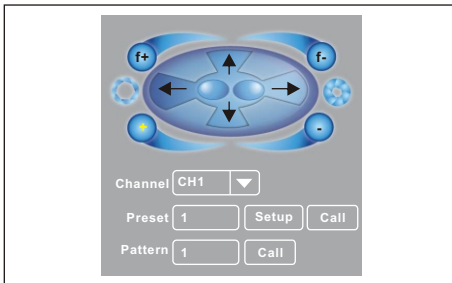
Figure:

- Channel:** select the channel where the PTZ camera is connected to
- Protocol:** Pelco-d/ Pelco-p - is a camera specification
- Address:** indicate the camera address, based on the dip switch settings of the camera
- Baud Rate:** insert the baud rate of the camera, 2400/4800/9600/19200/38400
- Data Bit:** choose between 5 / 6 / 7 / 8, factory setting on 8
- Stop Bit:** choose between 1 and 2, factory setting on 1
- Verification:** choose between No Odd or Even, factory setting on No
- Speed:** set 01

Once the PTZ camera has been installed, double check it pans tilts and zooms and performs all features.

Press **Save** to confirm or **Cancel** to delete

3.5.2 PTZ Cameras Movement Control

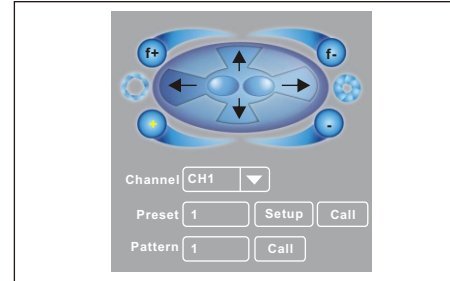


Press **Quick Menu>PTZ control**

Pressing the arrows shown in the picture below you can handle the goal of PTZ

Figure:

3.5.3 PTZ Preset Setting

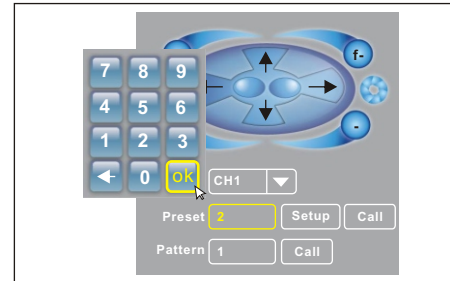


Press **Quick Menu>PTZ control**

There is the possibility to pre-set the image frames to capture in the case of determined events.

Use the PTZ Control Console to move the camera on the Area to Pre-set

Figure:



Assign a number to the determined location, press **Setup** to confirm.

Figure:

Multiple Pre-Set can be defined, it depends on the camera characteristics

Testing: Once completed, turn the camera on a different location. Click "Call" and the camera will automatically pan back to the preset location.

3.5.4 Linking Alarm to PTZ Camera



Figure:

Zone: insert the number Zone you want to associate to the channel/s video
Video Channel No.: bind the Zone to one or to all the 4 video channels

NOTE: if you need to record an alarm event you should set the recording schedule (see Chapter Registration)

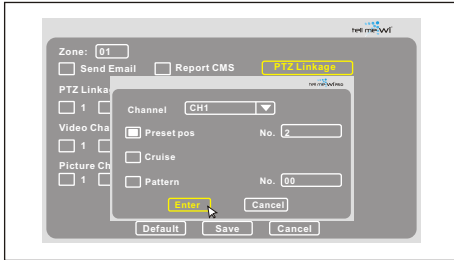


Figure:

NOTE: the features Cruiser and Pattern are functions that must be enabled on the camera before being managed from the Tell Me Wi Hub.

Cruise: useful to program the camera with a sequence of "preset" settings, select the item to enable the feature.

Pattern: it is a series of sequential programmable pan-tilt-zoom movements from a single camera

Press **Save** to confirm or **Cancel** to delete

Press **Quick Menu>Main Menu>Security>Alarm Link**

Once having set the presets, it is possible to connect them to zones (peripherals) to obtain the view inspection on the zone when tripping an alarm. Each zone can be associated to one/all the 4 video channels (cameras). The result is a function composed by an alarm event followed by an immediate recording of the event.
1. Go to "Security Settings" on the Main Menu, then select "Alarm Settings".

There are different ways to connect Zone and Cameras:
PTZ Linkage: enable the desired video channel and press the link to set the characteristics of the PTZ camera control
Preset: after having set the preset points from the Quick Menu>PTZ Linkage (see chapter: PTZ Cameras Control) enable the preset and indicate the number of locations to reach (it is possible to set one only preset position for each zone)