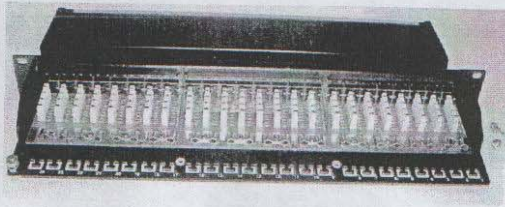


Full shielded patch panel installation instruction

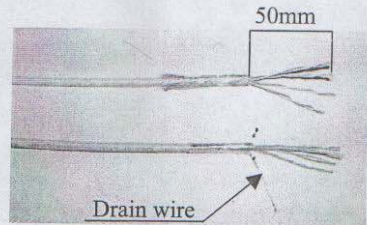
PPS series

1



Load down the screws and opening the metal cover.

2



Strip approximately 50mm from the cable jacket, fold back the foil or braid shield, and separate the wire into 4 pair each.

3

T568A

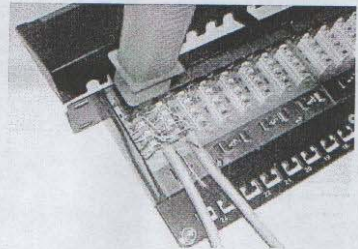
T568B



Pin 5	White/Blue	Pin 5	White/Blue
Pin 4	Blue	Pin 4	Blue
Pin 1	White/Green	Pin 1	White/Orange
Pin 2	Green	Pin 2	Orange
Pin 3	White/Orange	Pin 3	White/Green
Pin 6	Orange	Pin 6	Green
Pin 7	White/Brown	Pin 7	White/Brown
Pin 8	Brown	Pin 8	Brown

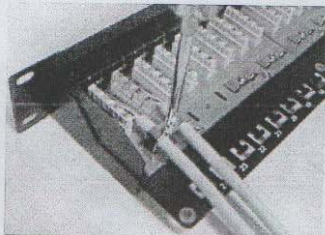
Follow the direction on the color-coding sticker to position T568A or T568B wiring, separate a little space on proper position and insert the wire pair by pair into each slot.

4



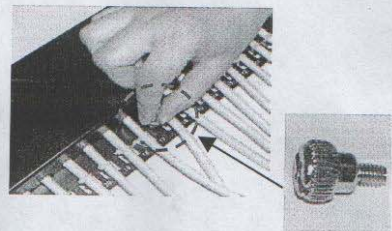
Press foil or braid shield to contact ground, and keep the cable straight.

5



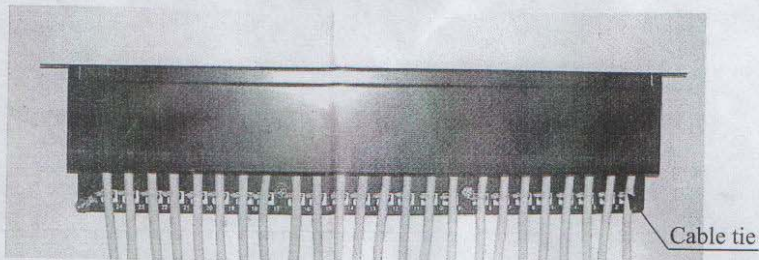
Fasten the screws through metal case to hold tightly down for two cable jackets in the same time.

6



Place the metal cover onto the bottom case and fasten screws.

7



Then complete the installation.