

# 10Gbps SFP+ PCI Express Server Adapter



## 10 Gigabit Performance Boosts Network Traffic

The PLANET ENW-9801 Single-Port 10 Gigabit Ethernet server adapter is an optimal solution for Ethernet applications by providing strict low-power budgets and small form factor. It offers simple integration into any PCI Express x8 server slot via one SFP+ slot. The onboard controller featured on the ENW-9801 integrates embedded technology and a 10GbE MAC into a single chip that offers up to 10Gbps of network throughput. PLANET Network solution greatly reduces the TCP/IP packet processing tasks of the server's CPU by performing enhanced data-handling algorithms, thereby providing nearly 10Gb line speed performance with the simplicity of a conventional Network Interface Card (NIC).

## Next Generation Server Adapter for growth and expansion of networking environments

The ENW-9801 is a PCI Express 10G Ethernet adapter designed to address high-performance system application requirements. With the innovative PCI Express Bus Architecture, the ENW-9801 provides better performance than the network cards based on 32/64bit PCI architecture. It provides the best solution for one of the major issues of Server Farm Networks - communication speed. Ten times faster than existing 1000Base-SX/LX solutions, using the PLANET ENW-9801 to connect your servers and workstations guarantees extremely high throughput and excellent signal quality.

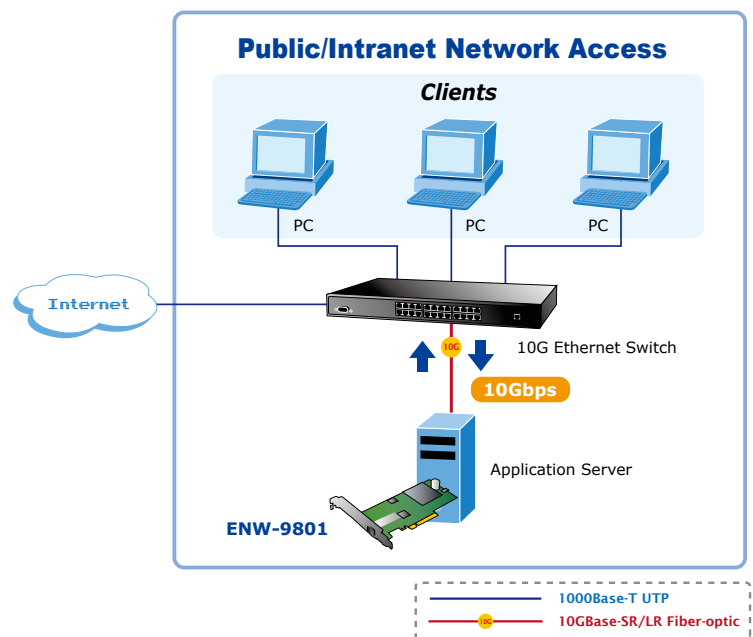
## KEY FEATURES

- One SFP+ slot
- PCI Express x8 Host Bus interface
- 16K Jumbo Frame
- IEEE 802.1Q Tagged VLAN
- IEEE 802.1p CoS traffic priority
- SNMP RMON Statistics
- Low Power Consumption
- Complies to Microsoft, Linux, FreeBSD, Solaris OS
- Virtual NIC support
- Lower CPU utilization: reduce CPU utilization and improve throughput

## APPLICATIONS

### Server NICs

With ten times performance of existing Gigabit transmission, the ENW-9801 can easily act as a server NICs of your networks by wiring to the backbone Switches. With one PCI Express interface design, the ENW-9801 is right for the main board with PCI Express now and future.



**SPECIFICATION**

Product	10Gbps SFP+ PCI Express Server Adapter
Model	ENW-9801
<b>Hardware Specification</b>	
Attachment Interface	PCI Express Host Bus Interface, 8 lanes / 4 lanes PCI Express Rev 1.1a
Media Interface	1 SFP+ slot (SFF-8431)
Optical Module Options	LRM, LR, SR
Cabling Options	SFP+ LC connector, 50/125µm & 62.5/125µm multi-mode fiber cable. 9/125µm single-mode cable.
Memory	3Mb internal memory
Jumbo Frame	16K
LED Indicators	Link / Active per port
Typical Power Dissipation	10 Watts
Dimension ( W x D )	147 x 63.5 mm (Low Profile)
<b>Advanced Function</b>	
Layer 2 Features	<ul style="list-style-type: none"> <li>• IEEE 802.3x Flow Control support</li> <li>• IEEE 802.1Q VLAN support</li> <li>• Multicast ACL</li> </ul>
Performance enhancements	<ul style="list-style-type: none"> <li>• Microsoft Scalable Networking</li> <li>• Receive-side scaling (RSS): Optimization for multiple CPUs under Windows OS control</li> <li>• Reduced host bus traffic</li> <li>• Optimization for multiple CPUs</li> <li>• IP acceleration</li> <li>• Widely used network protocol</li> <li>• IP, TCP and UDP checksum offloading</li> <li>• Large Send (up to 64 KB): Increased network throughput</li> <li>• IPv4, IPv6</li> </ul>
OS Support	<ul style="list-style-type: none"> <li>• Windows Server 2003, Windows Server 2008</li> <li>• Windows XP, Windows Vista™, Windows 7</li> <li>• Linux 2.4, Linux 2.6, Linux 64-bit</li> <li>• Redhat Enterprise Linux 4.7 &amp; 5.3</li> <li>• VMware® ESX 3.5</li> <li>• Multiple queues management</li> <li>• Windows Management Interface (WMI)</li> </ul>
<b>Standards Conformance</b>	
Regulation Compliance	FCC Part 15 Class B, CE
Standards Compliance	IEEE Std 802.3ae: 10Gbps Ethernet IEEE 802.3x: Flow Control and Back pressure IEEE 802.1Q: VLAN Tagging
<b>Environment</b>	
Operating	Temperature: 0 ~ 65 Degree C Relative Humidity: 5 ~ 95% (non-condensing)
Storage	Temperature: -10 ~ 85 Degree C Relative Humidity: 5 ~ 95% (non-condensing)

**ORDERING INFORMATION**

ENW-9801	10Gbps SFP+ PCI Express Server Adapter
----------	--

**RELATIVE PRODUCTS**

ENW-9800	Dual 10Gbps SFP+ PCI Express Server Adapter
----------	---

**AVAILABLE MODULES**

MTB-SR	SFP+ Port 10GBase-SR mini-GBIC Module (Multi-mode / 850nm / max. 550m)
MTB-LR	SFP+ Port 10GBase-LR mini-GBIC module (Single mode / 1310nm / max. 10km)