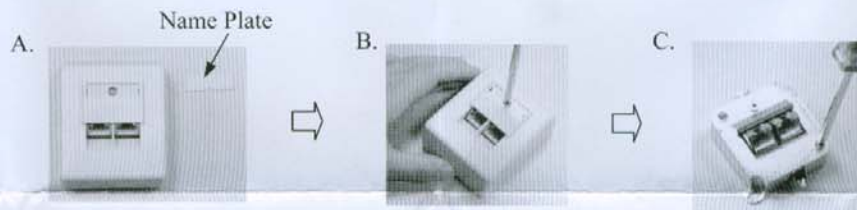


# German Surface Mounted Box

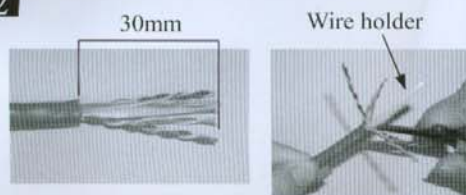
308 series

**1**



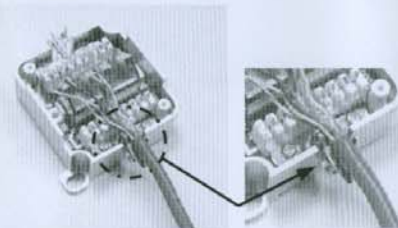
Load down the name plate and tapping screws step by step.

**2**



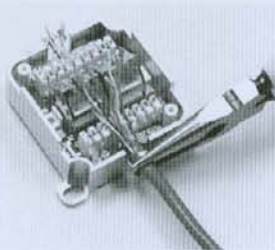
Strip approximately 30mm of the cable jacket, separate to 4 pair each and use the cutter to cut the wire holder.

**3**



Insert the cable jacket directly into the "Cable Clamp".

**4**



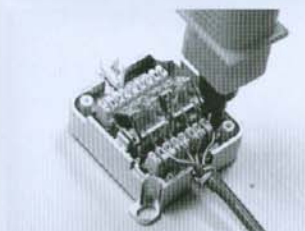
Using the "Plier" bending to hold tightly.

**5**

| T568A |              | T568B |              |
|-------|--------------|-------|--------------|
| Pin 5 | White/Blue   | Pin 5 | White/Blue   |
| Pin 4 | Blue         | Pin 4 | Blue         |
| Pin 1 | White/Green  | Pin 1 | White/Orange |
| Pin 2 | Green        | Pin 2 | Orange       |
| Pin 3 | White/Orange | Pin 3 | White/Green  |
| Pin 6 | Orange       | Pin 6 | Green        |
| Pin 7 | White/Brown  | Pin 7 | White/Brown  |
| Pin 8 | Brown        | Pin 8 | Brown        |

Follow the KRONE IDC color code to position T568A or T568B wiring.

**6**



Use the KRONE impact tool to crimp and connect the wires.

**7**



Place the upper cover, screws, name plate, then complete the installation.